



I, Kitea Tipuna, Tumu Whakarae Chief Executive, hereby give notice that a Māori Standing Committee Meeting will be held on:

Date: Tuesday, 12 November 2024
Time: 10:00 am
Location: Council Chamber, Wairoa District Council,
Coronation Square, Wairoa

AGENDA

Māori Standing Committee Meeting

12 November 2024

MEMBERSHIP: His Worship the Mayor Craig Little, Mr Henare Mita, Ms Theresa Thornton, Ms Fiona Wairau, Cr Benita Cairns, Cr Roslyn Thomas, Ms Erena Hammond, Ms Amanda Reynolds, Ms Whaiora Maindonald

The agenda and associated papers are also available on our website: www.wairoadc.govt.nz

For further information please contact us 06 838 7309 or by email info@wairoadc.govt.nz

Order Of Business

1	Karakia	5
2	Apologies for Absence	5
3	Declarations of Conflict of Interest	5
4	Chairperson’s Announcements.....	5
5	Late Items of Urgent Business	5
6	Public Participation	5
7	Minutes of the Previous Meeting	5
8	General Items.....	13
8.1	Rakaipaaka Purongo ā-Takiwā	13
8.2	Monthly Relationship Manager Report - October.....	17

- 1 KARAKIA**
- 2 APOLOGIES FOR ABSENCE**
- 3 DECLARATIONS OF CONFLICT OF INTEREST**
- 4 CHAIRPERSON'S ANNOUNCEMENTS**
- 5 LATE ITEMS OF URGENT BUSINESS**
- 6 PUBLIC PARTICIPATION**

A maximum of 30 minutes has been set aside for members of the public to speak on any item on the agenda. Up to 5 minutes per person is allowed. As per Standing Order 15.1 requests to speak must be made to the Chief Executive Officer at least one clear day before the meeting; however this requirement may be waived by the Chairperson. Requests should also outline the matters that will be addressed by the speaker(s).

7 MINUTES OF THE PREVIOUS MEETING

Ordinary Meeting - 1 October 2024

**MINUTES OF WAIROA DISTRICT COUNCIL
MĀORI STANDING COMMITTEE MEETING
HELD AT THE COUNCIL CHAMBER, WAIROA DISTRICT COUNCIL, CORONATION SQUARE, WAIROA
ON TUESDAY, 1 OCTOBER 2024 AT 10:01 AM**

PRESENT: Mr Henare Mita, Ms Fiona Wairau, Cr Benita Cairns, Cr Roslyn Thomas, Ms Erena Hammond, Ms Amanda Reynolds, Ms Whaiora Maindonald

IN ATTENDANCE: **Michael Hardie** (Pouwhakarae – Hua Pūmau | Group Manager Assets and Infrastructure), **Juanita Savage** (Pouwhakarae Rātonga Hapori me te Whakawhanake | Group Manager Community Services and Development), **Frances Manase** (Kaiurungi Mana Ārahi | Governance Officer), **Duane Culshaw** (Pouahurea Māori | Māori Relationships Manager), **Nathan Heath** (Māori Relationship Manager Northern HB), **Maraea Anaru** (Public Participation), **Mere Kokiri-Tamanui** (Public Participation), **Graeme Johnston** (Kaiurungi | BCA Manager)

1 KARAKIA

The opening karakia was given by the Chair, Mr Henare Mita.

2 APOLOGIES FOR ABSENCE

APOLOGIES

COMMITTEE RESOLUTION 2024/242

Moved: Ms Whaiora Maindonald

Seconded: Ms Fiona Wairau

That the apology received from His Worship the Mayor, Craig Little and Ms Theresa Thornton be accepted and leave of absence granted.

CARRIED

3 DECLARATION OF CONFLICT OF INTEREST

To be declared as the agenda progresses.

4 CHAIRPERSON'S ANNOUNCEMENTS

The Chair welcomed

5 LATE ITEMS OF URGENT BUSINESS

6 PUBLIC PARTICIPATION

Maraea Anaru from Rongomaiwahine presented the Mahia Freshwater Plan and the the Ōpoutama Cultural Impact Assessment. The below was highlighted:

Mahia Freshwater Plan

- Focuses on the revitalisation and protection of Māhia's freshwater and environmental resources over a 100-year period.
- The plan addresses historical and current challenges, emphasising that human actions have led to significant ecological degradation over the last century.
- The aim is to reverse this decline through collaborative efforts rooted in mātauranga Māori (Māori knowledge) and kaitiakitanga (guardianship).
- Ms. Anaru outlines the condition of 12 distinct catchment areas, their unique characteristics, and priorities for action. It underscores the interconnectedness of water, land, and community prosperity, advocating for community-led initiatives and partnerships to restore ecological balance and support sustainable practices.

Ōpoutama Review Management Plan

- Ms. Anaru highlighted the historical significance of the area, tracing the mana whenua (territorial rights) of local hapū and iwi to their ancestral kaitiaki.
- The report discusses the reserve's management history and the necessity of including cultural considerations in its governance.
- Specific issues include alterations to the Waipiata Stream and its estuary due to infrastructure developments and flood prevention measures.
- Ms. Anaru emphasises the need for collaborative partnerships with local entities and government bodies to ensure the protection and sustainable management of the land and waterways.

The committee recommend that the council adopts the Ōpoutama Review Management Plan.

Mere Kokiri-Tamanui presented to the Māori Standing Committee on Te Reinga Awa and the Quarry Project. The below discussions were highlighted:

- Ms. Kokiri-Tamanui spoke to a call for action, emphasising the importance of embracing cultural heritage and addressing racism through strategic agency. She had highlighted key structural issues affecting local communities particularly in the environmental management and local governance.
- The Chair reassured that both Wairoa District Council (WDC) and Hawkes Bay Regional Council are committed to collaborating with hapū and are interested in the progress of the Te Reinga Awa Project.
- The Quarry Project is currently on hold, and according to AGM minutes, two additional partners are being considered for support. The GM of Regulatory noted that no resource consent application has been received yet but confirmed that, once submitted to WDC, it will follow due process and become public knowledge.
- The committee agreed that Ms. Kokiri-Tamanui will be informed when the application is received, and confirmed hui minutes will be sent to her via email.

- The Māori Relationships Manager will update MSC on the progress of the resource consent.

7 MINUTES OF THE PREVIOUS MEETING

COMMITTEE RESOLUTION 2024/243

Moved: Ms Amanda Reynolds

Seconded: Ms Whaiora Maindonald

That the minutes [and confidential minutes] of the Ordinary Meeting held on 20 August 2024 be confirmed.

CARRIED

8 GENERAL ITEMS

8.1 MONTHLY RELATIONSHIP MANAGER REPORT - AUGUST 2024

COMMITTEE RESOLUTION 2024/244

Moved: Mr Henare Mita

Seconded: Ms Erena Hammond

The Kaiurungi Mana Ārahi | Governance Officer RECOMMENDS that Committee receive this report.

CARRIED

8.2 TĀ TE POUAHUREA MĀORI PŪRONGO

COMMITTEE RESOLUTION 2024/245

Moved: Mr Henare Mita

Seconded: Ms Erena Hammond

The Pouahurea Māori Relationships Manager RECOMMENDS that the Māori Standing Committee receives the report.

CARRIED

The Māori Relationships Manager introduced the report and highlighted the below:

- The Council approved Wairoa District Council's (WDC) request to receive up to 4,000 tons per year.
- Planning is ongoing before the start date, and discussions with mana whenua will continue.
- Community education is still needed.
- Cr. Cairns and Cr. Thomas will meet with WDC to establish a working group. The Māori Relationships Manager expressed interest in attending a site visit at the Toa site in Ōmarunui, which also has an education group.

The Group Manager of Assets and Infrastructure provided a verbal update on the Freshwater Laboratory Closure.

- With the new drinking rules, every water lab has to be accredited level 1 which includes new staff and extra resources needing to be implemented. Due to the closure, WDC will collect the samples and these samples are sent out of town.
- November 15th is the official laboratory closure date.

Marae Compliant schedule

- Marae are not required to have building compliance schedules unless they plan to upgrade.
- The BCA Manager advised that marae located in flood zones and applying for consents may face ongoing impacts on their insurance.

8.3 MSC TAKIWĀ REPORT - RAKAIPAACA AND CHAIRMAN

COMMITTEE RESOLUTION 2024/246

Moved: Mr Henare Mita

Seconded: Ms Fiona Wairau

The Pouahurea Māori Relationships Manager RECOMMENDS that the Māori Standing Committee receives the report.

CARRIED

The Chair, Mr. Mita introduced the report and advised there is an adjustment to his report. His Worship the Mayor, Craig Little did attend the Infrastructure and Regulatory Meeting.

The Chair would like to make a formal request for the Māori Standing Committee to attend the Infrastructure and Regulatory Meetings as well as the Strategy, Wellbeing and Economic Development Meetings.

VERBAL UPDATES

Ms. Reynolds (Te Wairoa Hōpūpū):

- Rangiahua Marae is hosting the Pahaka on November 9th

Ms. Maindonald (Te Wairoa):

- Rua Taniwhā are looking rediverting their drainage towards the road as the drain is not deep enough.

Ms. Wairau (Māhia Mai Tawhiti):

- The Mahia community have been overwhelmed with tangihanga, which has brought building structure issues to light.
- Ms. Wairau seeked direction from the Committee in relation to private urupa processes for where tipuna are currently laid to rest. It was suggested that whānau create their own plot

directory.

Ms. Hammond (Ruakituri):

- Still going through the processes with the Māori land court
- First Aid course will be provided for Te Reinga and Erepeti marae

The closoing karakia was given by the Chair, Henare Mita at 12:13pm.

The minutes of this meeting were confirmed at the Māori Standing Committee Meeting held on 12 November 2024

Māori Standing Committee – Actions Sheet

<u>ACTION</u>	<u>MEETING THE ACTION WAS RAISED IN</u>	<u>DUE DATE</u>	<u>OFFICER RESPONSIBLE</u>	<u>STATUS</u>	<u>COMMENTS</u>	<u>PUBLIC EXCLUDED</u>
Crown Manager to be introduced to the Māori Standing Committee at next scheduled meeting.	20/08/2024	12/11/2024	Kitea Tipuna and Juanita Savage			No
Provide clear communication to the community in regard to the closure of the Freshwater Laboratory closure	01/10/2024	12/11/2024	Mike Hardie and Kate Standring	Completed	An article has been developed that will go into the Wairoa Star.	No
Marae specific building compliance schedules to be created and to be tabled to MSC	01/10/2024	12/11/2024	Hine Viriaere and Graham Johnston			No
Go through outstanding recommendations from MSC to Ordinary Council	01/10/2024	12/11/2024	Duane Culshaw			No
Formal request for MSC representation at the Infrastructure and Regulatory Committee Meetings and Strategy, Wellbeing and Economic Development	01/10/2024	12/11/2024	Juanita Savage	In Progress		No

Meetings						
----------	--	--	--	--	--	--

.....

CHAIRPERSON

8 GENERAL ITEMS

8.1 RAKAIPAACA PURONGO Ā-TAKIWĀ

Author: Frances Manase, Kaiurungi Mana Ārahi | Governance Officer

Authoriser: Juanita Savage, Pouwhakarae - Rātonga Hapori me te Whakawhanake | Group Manager Community Services & Development

Appendices: 1. Rakaipaaka Purongo ā-Takiwā [↓](#)

PURPOSE

- 1.1 This report provides information for the Māori Standing Committee on the MSC takiwā report for Rakaipaaka. No decisions are required by the Committee at this stage.

RECOMMENDATION

The Kaiurungi Mana Ārahi | Governance Officer RECOMMENDS that Committee receive the report.

**Wairoa District Council MSC Meeting 10am,
12 Turei/Rātu Noema/Whiringa ā-rangi 2024,
Rakaipaaka Purongo ā-Takiwā,
Henare Mita (MSC Heamana)**

E tika ana kia aro ake te titiro ki lhowa-ō-ngā-mano nāna nei ngā mea katoa i hanga. Kia whakanuia a ia me te tangi mōteatea ki a rātou kua nunumi ki te po. Ka tae po, rātou ki a rātou, ka tae awatea, tātau ki a tātau. E te tii, e te taa, tēnā tātau me ngā kaupapa o te wā hei whakaarotanga, hei kōrerotanga ma tātau, ma te Komiti Māori. Tēnei ahau e mihi atu ana.

[This report is informational only and requires no decisions to be made on the part of the Wairoa District Council Māori Standing Committee. It is recommended that this committee receive the report.]

Te Iwi o Rakaipaaka Trust (TIORT) Taiao Wānanga:

On Saturday the 5th of October TIORT held a Taiao Wānanga, hosted at Kahungunu Marae and facilitated by taiao advisor Leana Bariball who has been contracted to develop a Ngāti Rakaipaaka Taiao Management Plan. Leana addressed a number of salient topics such as identifying sites of significance and the history relating to them. We discussed mahinga kai areas, our values and aspirations pertaining to the environment and the type of working relationship we are seeking to foster with our local authorities. We are fortunate to have someone of her calibre to guide us through these many tasks, her knowledge, experience and insight as a scientist, absolutely invaluable to us. Her presentation focused on three areas: Mōrere, Kōkohu and the Hīrere Stream.

Ngā Hua o Mōrere:



In time and in association with Rongomaiwahine Iwi Trust (RIT) and the Department of Conservation (DOC), TIORT will assume the management of Ngā Hua o Mōrere, our visit a glimpse into how this matter is progressing. Graeme Symes spoke about some of the history of Mōrere, followed by Leana demonstrating procedures and protocols related to water testing. Naturally enough there was a discussion about the medicinal and weaving properties of different plants, all of us, with so little indigenous flora left in Nuhaka, soaking up our surroundings.

Kōkohu:

Kōkohu is an area of cultural significance to Rakaipaaka but more specifically the hapū, Ngai Te Kauwaha/Kauaha. Their mountain Mauwhiri stands here and Leana, herself of Ngai Te Kauwaha descent, was eager to hear information relating to this area. The photo below (far right) shows the Kōkohu Limestone Quarry, some whānau alarmed at its growth, while others

are unhappy that there are no locals amongst their workers. Next to it, is a photo with whānau in the foreground, and a line of large hills acting as a backdrop. Derrick Hickling was told that tucked away in a valley amongst these hills, situated about half-way up one of them and trickling out of solid bedrock, flows a continuous stream of fresh water. It is believed that this water originates from Waikaremoana.

On the far left, we have a photo of an area where some Ngai Te Kauwaha whānau once lived. A member of one of those whānau, Jayell Smith recalled some of her childhood memories here, while Moira Ropitini spoke about the experiences of her mother. Both were surprised at how small the waterfall in the background was, usually the volume of water cascading down from these hills is far greater. They also spoke of a more recent initiative where an earthquake monitoring system was installed on this property along with satellite telemetry technology to record and transmit the gathered data.



Hīrere Stream:



Our last site visit was the Hīrere Stream. For those of us brought up in the village, the Hīrere was a special area, a place where we could get away from our parents and not get into too much trouble. We would fish, eel, swim, whitebait and generally run amuck. Work undertaken by TIORT has transformed the landscape here and some whānau now use the newly prepared path as their regular walk. However the Hīrere forms part of the Aramātua Incorporated Landblocks, and so access can be an issue. This aside, the entire area in terms of its cultural significance to Rakaipaaka is hugely important, so gathering information on the Hīrere, the Nuhaka river and surrounding lands is crucial to our Taiao Management Plan.

The photo to the far right is a recently excavated drain that runs from Tamakahu Street to the Hīrere and forms part of TIORT's flood mitigation plan for this area following floods during Cyclone Gabrielle and the later November storm.

Second Taiao Wānanga:

On Tuesday the 15th of October, another Taiao Wānanga was held at Kahungunu Marae. The facilitators of this wānanga were Poipoia Limited, acting on behalf of Tātau Tātau o Te Wairoa (TToTW). Poipoia staff, Pia Pohatu and Kate Walker were tasked with assisting TIORT in the development of a Ngāti Rakaipaaka Taiao Management Plan with a specific focus on Te Mana o Te Wai. The ultimate goal is for all TToTW kāhui to develop their own individual Taiao Management Plans, that will sit collectively, under the umbrella of their parent body. As a member of the TToTW Taiao team, Leana Bariball was present to help guide and advise us, as Pia and Kate led us through their programme.

To help break up our day, the itinerary also included guest speakers. Benita Tahuri for instance delivered an informative discussion on certain aspects of Rongoa Māori, while Moira of the Department of Conservation (DoC) gave a detailed talk about Mōrere. She was followed by her colleague Theresa Chick, who spoke about the need for kāhui to develop policy, processes and procedures regarding whale strandings. All three speakers were well received and provoked healthy, robust discourse. Our final activity focussed on the Hīrere Stream, Pia and Kate by now, having to work overtime to extract as much information as possible from us; it had been a long, tiring day.

[It is recommended that this committee receive this report]

8.2 MONTHLY RELATIONSHIP MANAGER REPORT - OCTOBER

Author: Frances Manase, Kaiurungi Mana Ārahi | Governance Officer

Authoriser: Juanita Savage, Pouwhakarae - Rātonga Hapori me te Whakawhanake | Group Manager Community Services & Development

Appendices:

1. Monthly Relationship Manager Report - October [↓](#)
2. Wairoa Presentation [↓](#)

PURPOSE

- 1.1 The purpose of this report is to update the Māori Standing Committee on the work undertaken by the Hawke's Bay Regional Council Māori Relationship Manager (Northern Hawke's Bay) for the month of October 2024.

RECOMMENDATION

The Kaiurungi Mana Ārahi | Governance Officer RECOMMENDS that Committee receive the report.



Monthly Report for Wairoa, Mohaka & Northern Catchments – October 2024
Nathan Heath – Māori Relationship Manager (Northern Hawke's Bay)

1 November 2024

Wairoa HBRC activity report for October 2024.

1) HBRC update – including issues and Council & Committee meeting items of local relevance.

- A community hui is being held on Tuesday 5 November at 6pm at the War Memorial Hall to discuss the possible flood mitigation options for Wairoa.

 The image block contains an aerial photograph of the Wairoa area on the left, showing a winding river through green fields and residential areas. On the right is a poster for the "Wairoa Flood Mitigation Project". The poster has a green border and contains the following text:

WAIROA

FLOOD MITIGATION PROJECT

Since the devastating Cyclone Gabrielle North Clyde flooding, work has been ongoing to find possible solutions to help protect the community of Wairoa from future flood events.

Conversations with whānau and property owners who may be impacted by two of the technically viable options have already started, in order to give them time to understand how these options may impact them.

Our broader community kōrero about possible flood mitigation options for Wairoa will start with a community hui on **Tuesday, 5 November from 6pm** at the **War Memorial Hall, Queen Street, Wairoa**

Everyone is welcome, and we look forward to updating you all on this important community mahi.

Lawrence Yule, **Crown Manager**
info@wairoafloodproject.co.nz

- HBRC Council and Committee items of significance to the rohe –
 - **16 October – Regional Council Workshop.**
 - **23 October – Risk and Audit Committee.**
 - **30 October – Regional Council.** Adoption of the 2024-25 Annual Plan.

2) Wairoa District Update.

- Ecologist Nikki McArthur and Science team members from HBRC delivered 2 presentations on the impacts of Cyclone Gabrielle on the Shorebird population of Northern HB on 29 October. The team presented to the Matangirau Reserves Board and a Community Hui was held at QRS in the afternoon. A small but enthusiastic audience had plenty of questions about what can be done next to protect these precious taonga. A copy of Nikki's presentation is included in this email.
- I attended a 2 day Taiao Planning wānanga in Nuhaka, hosted by Te Iwi o Rakaipaaka and facilitated by Pia Pōhatu and Kate Walker from Poipoia. A series of wānanga are being held with Kāhui throughout Wairoa to support Kāhui Taiao aspirations and preparing for the development of

Freshwater Management Plans across the district. The ladies did an awesome job, but it was quite insightful to see firsthand just what a big job this is and it will require more effort and resourcing to enable mana whenua to undertake all the mahi required.

- Work was undertaken a fortnight ago to clean the drain behind Judges Parade at Māhanga. Locals have been asking for this to happen for some time now, so it was great to see it finally completed. More work is now being done to consider longer term options for addressing issues following the completion of the Hydrological Report for the area.
- Several concerns have been raised at the recent woody debris fires at Mohaka, Whakamahi and Iwitea over the last week. Staff and contractors were on site at Whakamahi and Iwitea to prevent the fires from spreading quickly. Given the windy dry conditions we have been experiencing recently extra precautions are being taken to prevent this from happening again.
- Duane Culshaw and I meet with our counterparts from Gisborne District Council this month to ensure we are aligned with our Freshwater planning and engagement given our shared cross boundary, catchments and Iwi acknowledgement areas. I have been involved in several hui with Matt Boggs, Director of CDEM Transformation for HB and attended a fantastic workshop with Whaea Aramanu Ropiha, on Hawkes Bay mana whenua representative structures.
- The Tsunami evacuation zones map for New Zealand has been updated. Please check the link below to see what this means for you and your whānau if you live anywhere near the coast.
<https://www.hbemergency.govt.nz/hazards/tsunami/>

Items of interest

- MfE has just released a fund for waste minimisation projects. Please check the link for funding criteria and eligibility. <https://environment.govt.nz/what-you-can-do/funding/waste-minimisation-fund/>
- Tairāwhiti – Pine, Profit and Cyclone, by Aaron Smale goes deep into the region's struggle with colonial legacies and environmental mismanagement. The book is available via Bridget Williams Books <https://www.bwb.co.nz/assets/BookInfoSheets/Tairawhiti-Smale-information-sheet.pdf>
- I have recently been reading "Becoming Tangata Tiriti" by Avril Bell. I can highly recommend this book as a Pākehā, Māori Relationship Manager. The book was very insightful in what it means to operate in the Tangata Tiriti space supporting Rangatiratanga and identifies some of the challenges and personal transformation required to do this as Pākehā. Anyone involved in building Te Tiriti based partnerships and relationships would benefit from reading this book.

Please contact me directly for any clarification or additional information you may require from the report.

Ngā mihi



Nathan Heath

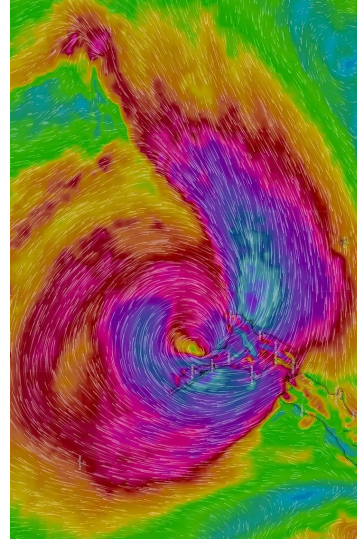
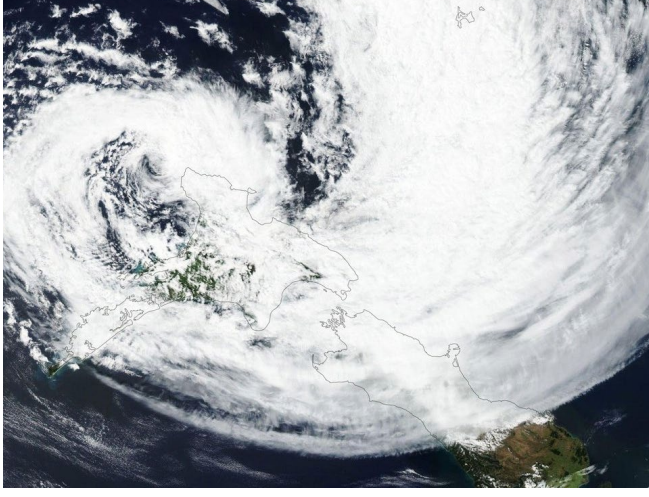
Māori Relationships Manager – Northern Hawke's Bay

Hawkes Bay Regional Council

T: 06 838 8527 C: 027 705 4060

Impacts of Cyclone Gabrielle on the coastal birds of northern Hawke’s Bay

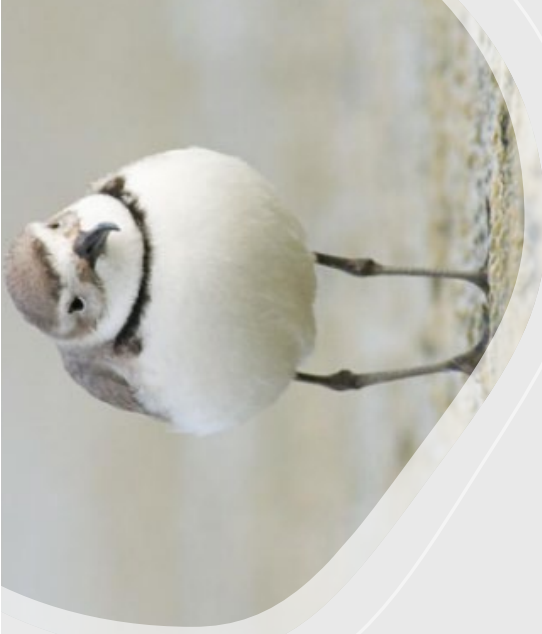
Nikki McArthur, Ryan Bauckham,
Annabel Beattie, Becky Shanahan
and Robin Toy



Context

- 79 bird species recorded along the Hawke's Bay coastline in 2021
- 60 of these species were present on the coastline between Māhia and the Mohaka RM

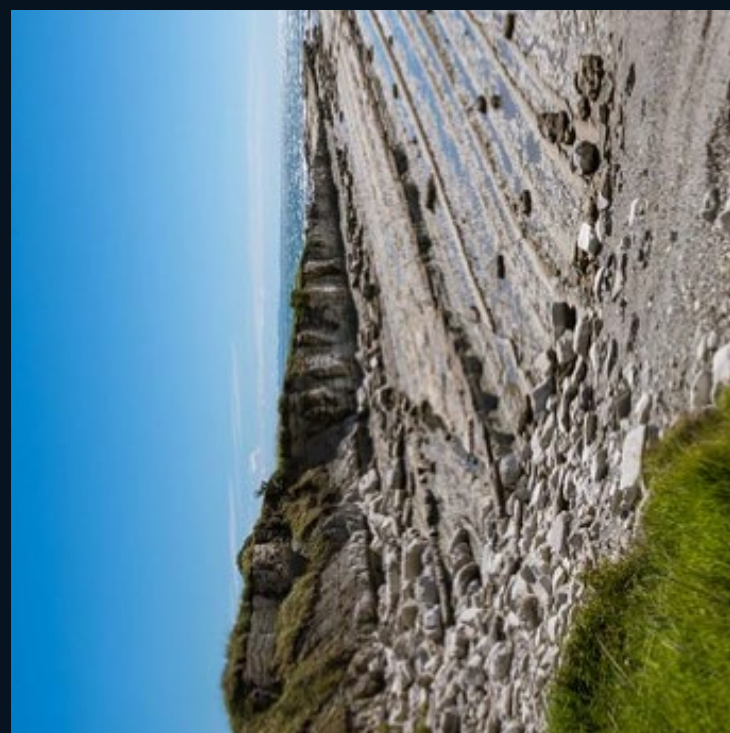




Hawke's Bay coastal habitats are vital links in a vast chain of habitats extending from Alaska to New Zealand.

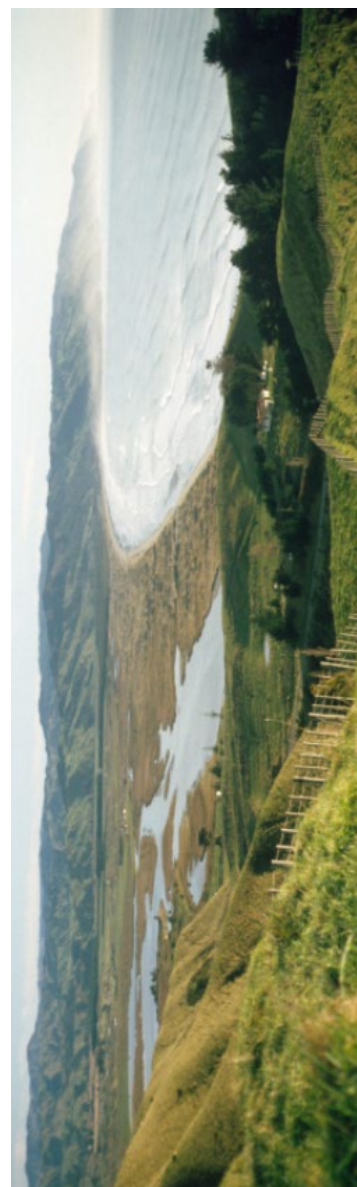


Māhia Peninsula supports:



- 99% of the region's ruddy turnstones
- 38% of the region's tūturiwhatu / NZ dotterels
- 30% of the region's kuaka / bar-tailed godwits

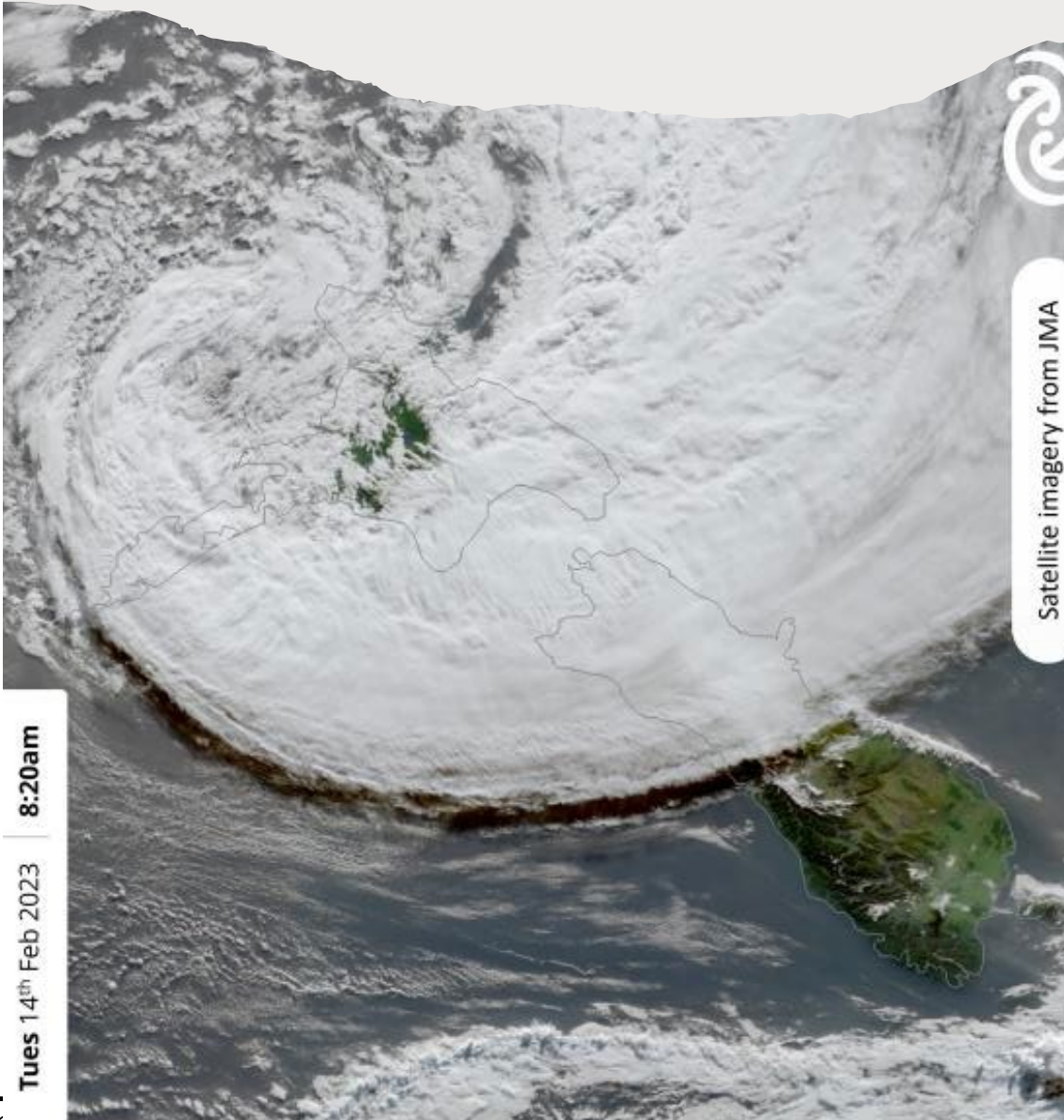
Rank	Site Name	Number of indigenous species counted	Total number of indigenous birds counted
1	Te Whanganui-a-Orotū / Ahuriri Estuary	33	3,356
2	Pōrangahau Estuary	24	1,311
3	Maungawhio Lagoon	22	420
4	Tukituki Estuary	19	404
5	Mohaka River estuary	19	219
6	Wairoa River estuary	18	482
7	Te Paeroa Lagoon	17	839
8	Muddy Creek	17	268
9	Whakaki Lagoon	16	282
10	Nuhaka River mouth	15	92



Tues 14th Feb 2023 8:20am

Cyclone Gabrielle

- 1 in 550-year event
- Record-high flooding on HB rivers
- Nine lives lost
- \$5 billion in damage to property and infrastructure
- Coastal flooding and erosion
- Sedimentation
- Coastline inundated with woody debris

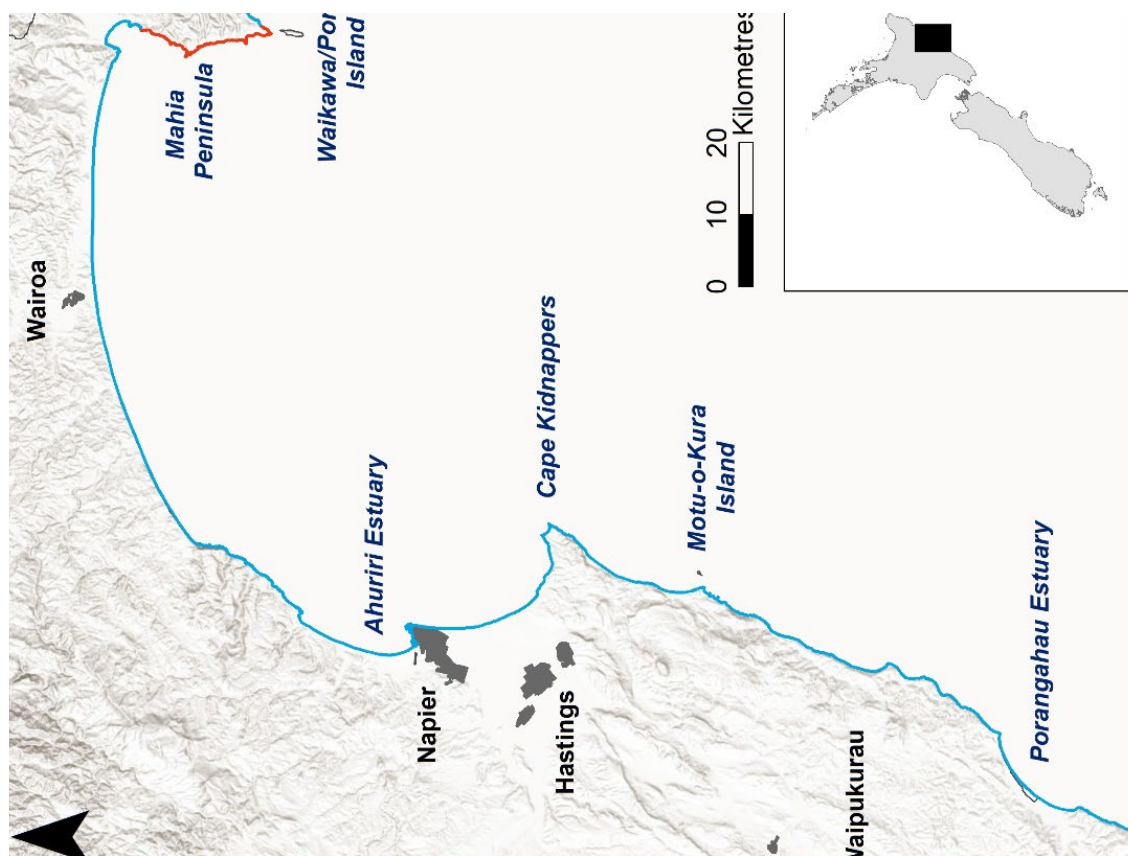


Satellite imagery from JMA

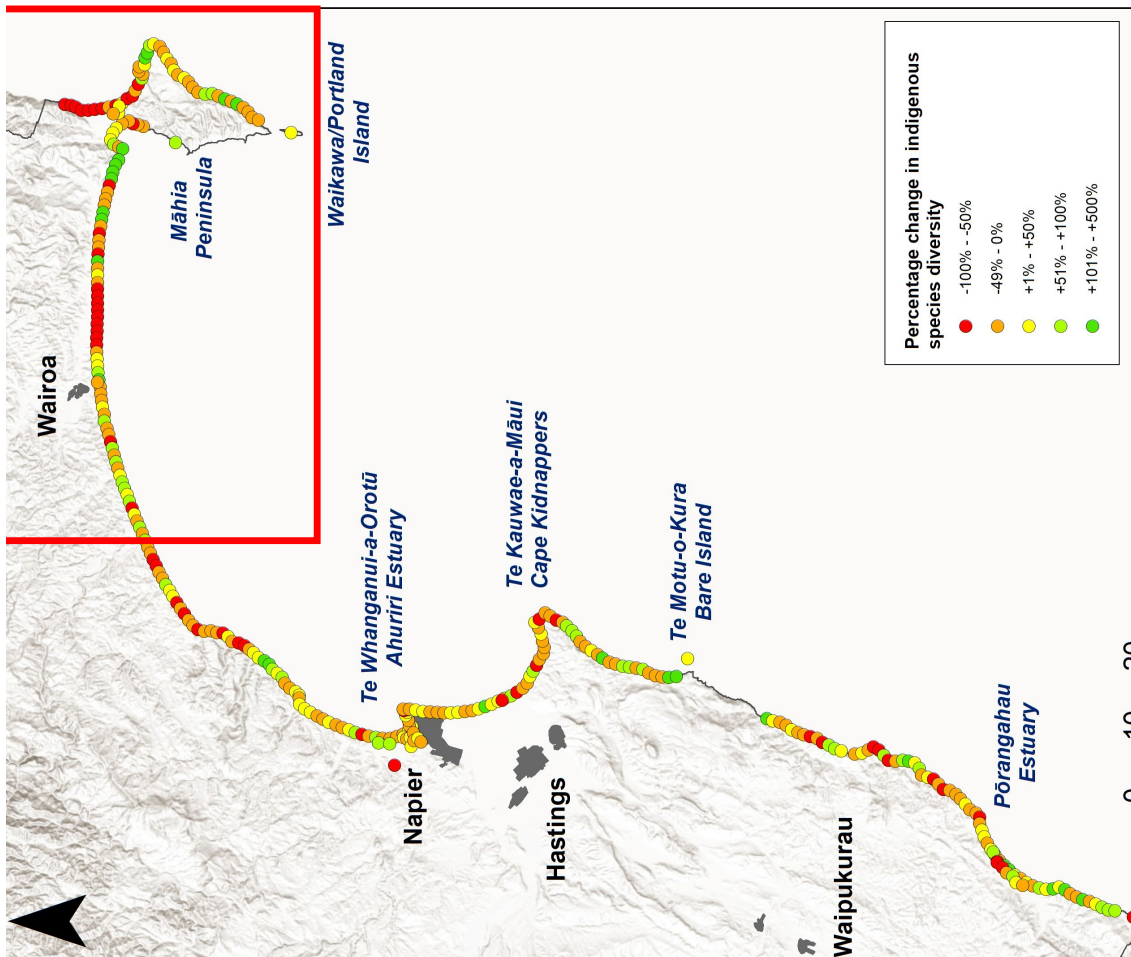
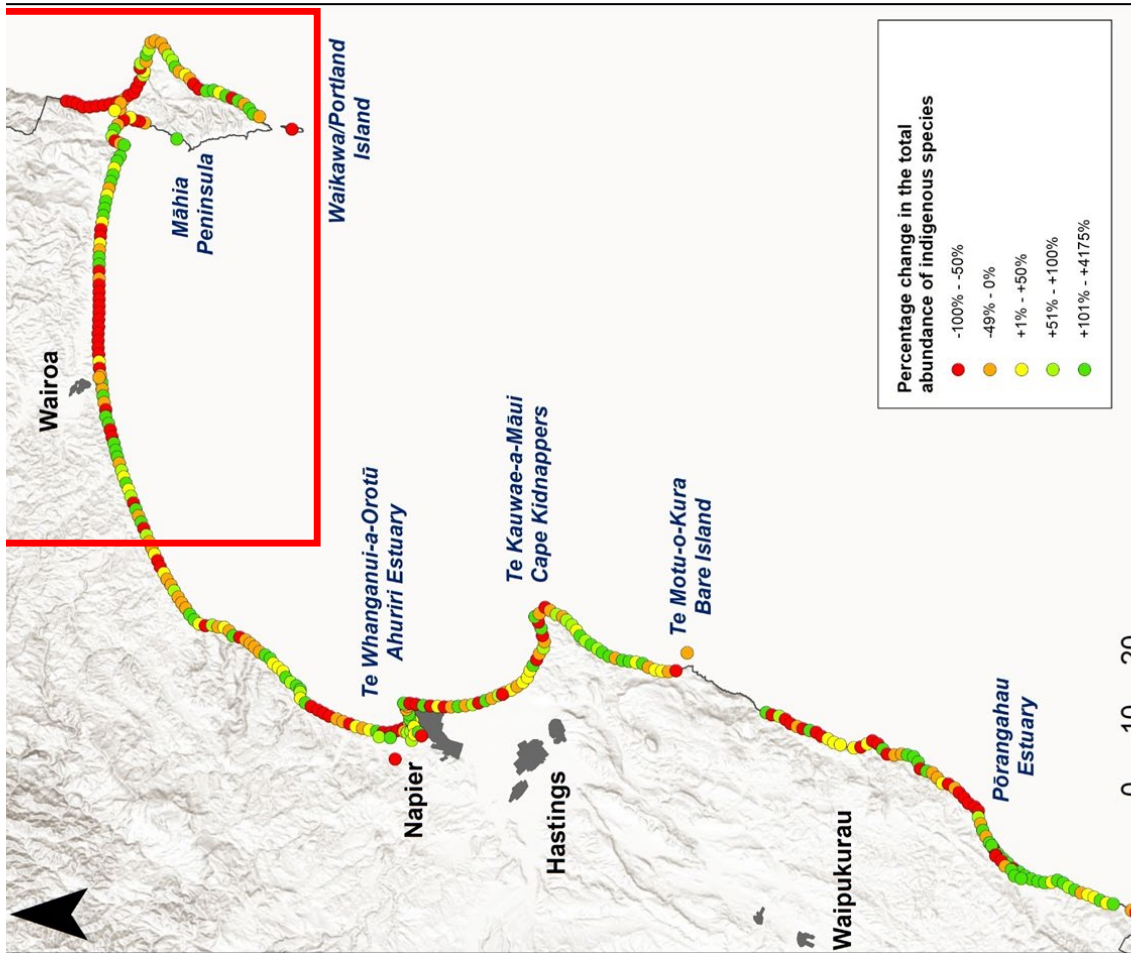


Survey methods

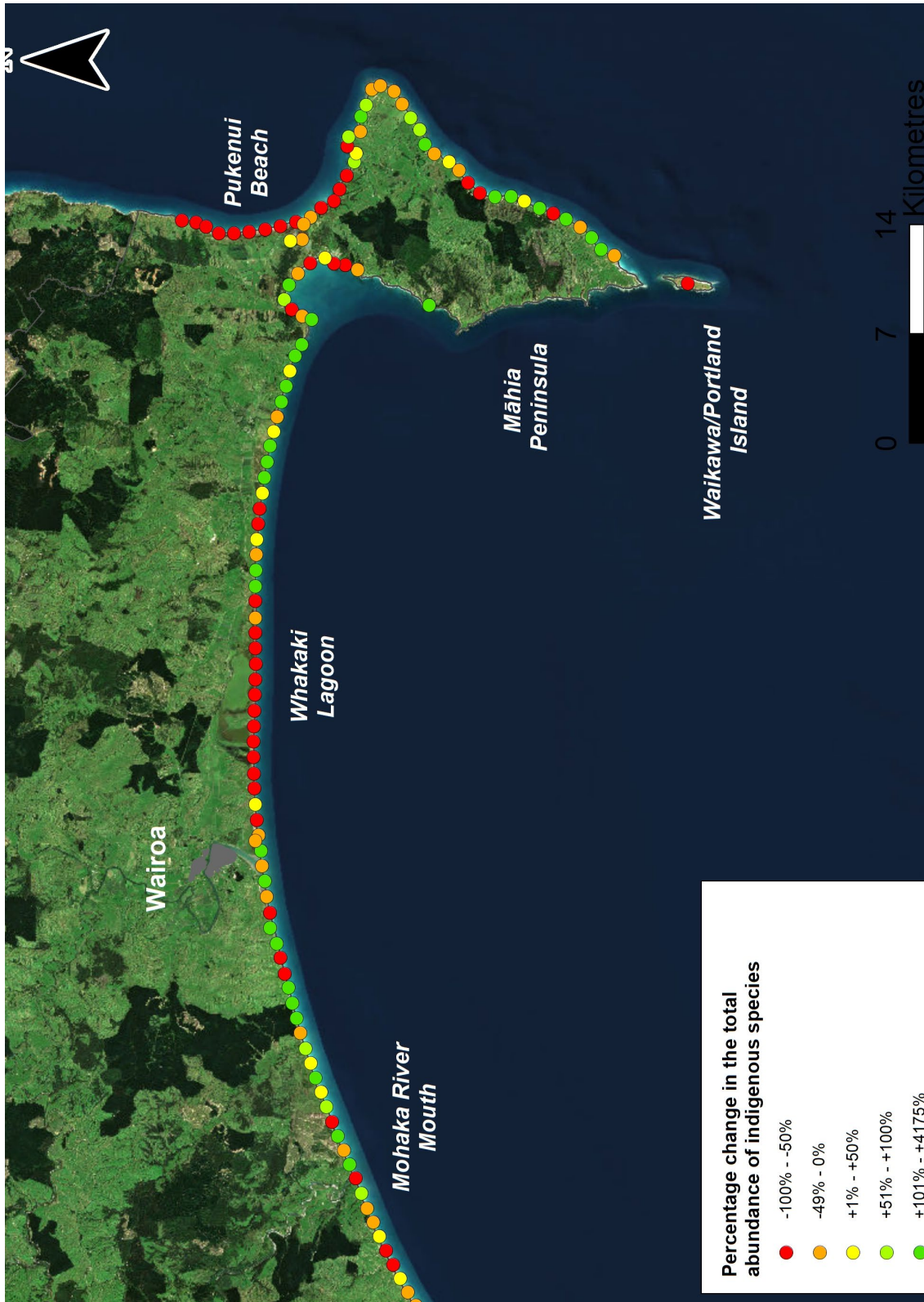
- 321 km of the Hawke's Bay coastline surveyed in Jan 2021 and Jan 2024
- Birds were counted in 1 km survey sections
- Separate counts carried out at 65 estuaries, lagoons and rivermouths
- Extreme care taken to avoid missing, or double-counting birds



Hawke's Bay	Pre-cyclone (2021)	Post-cyclone (2024)
Total number of species	79	77
Total number of birds	32,660	25,640
Mean number of native spp per survey section	5.8	5.9
Mean number of indigenous birds per survey section	54	64
Northern Hawke's Bay	Pre-cyclone (2021)	Post-cyclone (2024)
Total number of species	60	53
Total number of birds	10,090	5,424
Mean number of native species per survey section	5.5	4.9
Mean number of indigenous birds per survey section	48	37







Pohowera / banded dotterel

	2021 total	2024 total	Percent change
Hawke's Bay	395	271	31% decline
Northern Hawke's Bay	146	73	50% decline





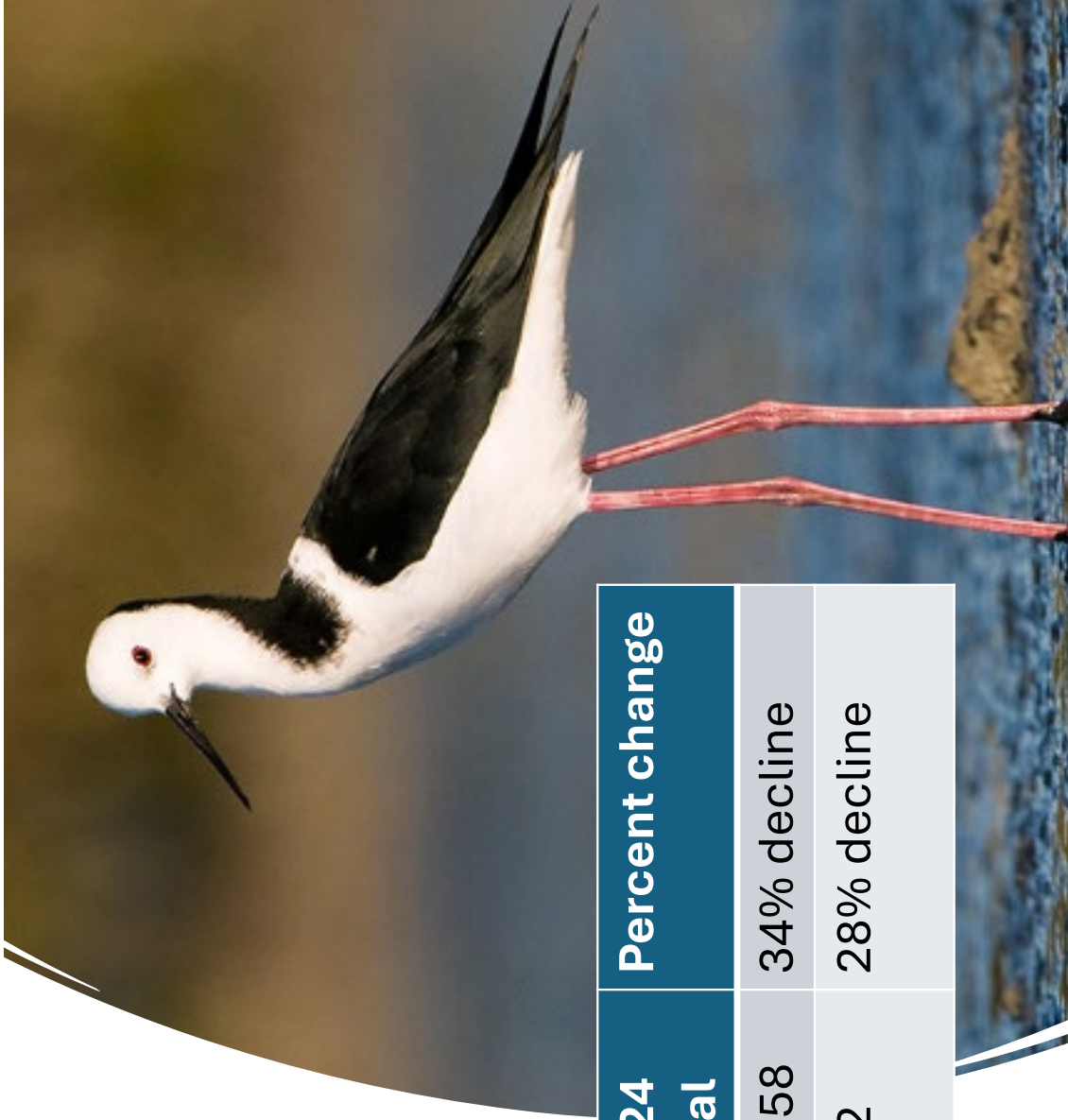
Tūturiwhatu / Northern New Zealand dotterel



	2021 total	2024 total	Percent change
Hawke's Bay	222	142	36% decline
Northern Hawke's Bay	61	35	43% decline

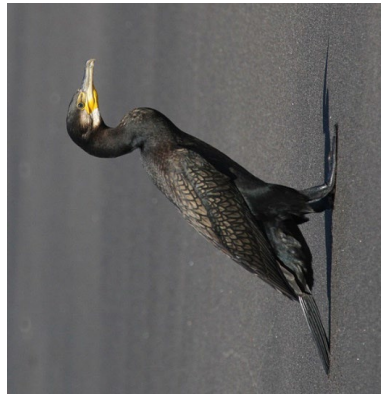


Poaka / pied stilt



	2021 total	2024 total	Percent change
Hawke's Bay	1,606	1,058	34% decline
Northern Hawke's Bay	235	162	28% decline

Phalacrocorax shags



Kawau / black shag	2021 total	2024 total	Percent change
Hawke's Bay	500	298	40% decline
Northern Hawke's Bay	167	26	84% decline



Kāruhiruhi / pied shag	2021 total	2024 total	Percent change
Hawke's Bay	185	108	42% decline
Northern Hawke's Bay	174	86	51% decline





Tōrea pango / variable oystercatcher

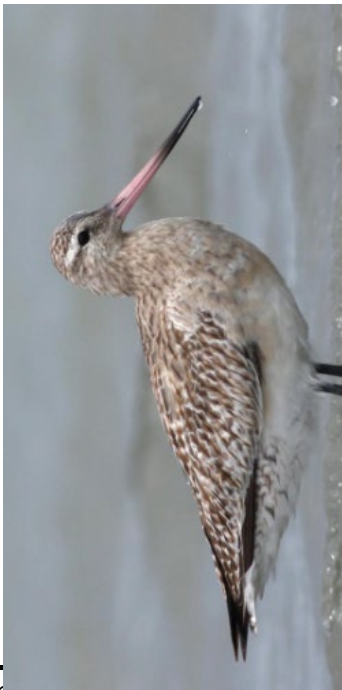


	2021 total	2024 total	Percent change
Hawke's Bay	516	510	1% decline
Northern Hawke's Bay	183	129	30% decline

	2021 total	2024 total	Percent change
Hawke's Bay	1,218	1,257	3% increase
Northern Hawke's Bay	347	321	7% decline

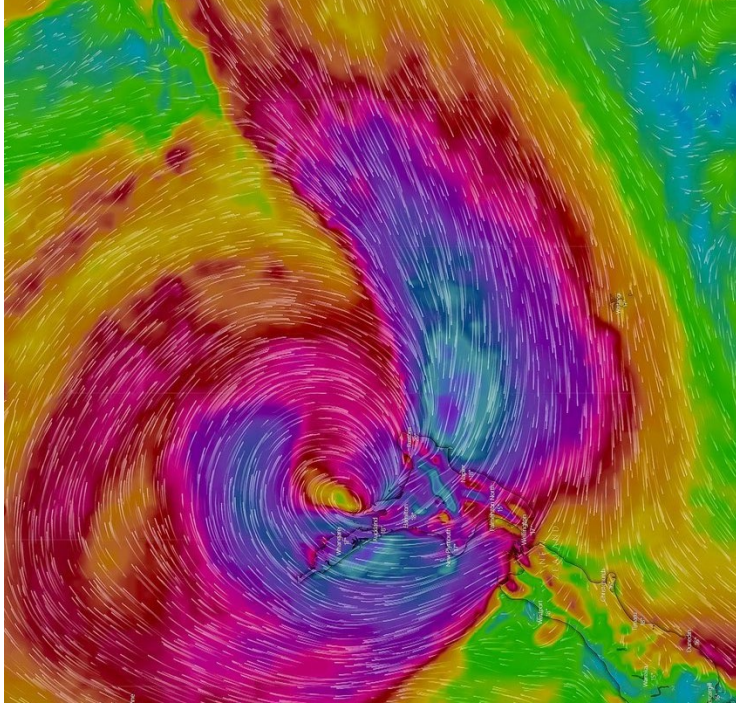
	2021 total	2024 total	Percent change
Hawke's Bay	89	111	25% increase
Northern Hawke's Bay	76	106	39% increase

	2021 total	2024 total	Percent change
Hawke's Bay	9	10	11% increase
Northern Hawke's Bay	5	5	No change



Conclusions

- Extreme weather events can lead to serious declines in coastal bird populations at regional scales
- Several coastal bird species have a high degree of vulnerability to extreme weather events and climate change
- A number of coastal bird species were more severely impacted in northern Hawke's Bay than elsewhere in the region
- Several other species appeared to be unaffected by Cyclone Gabrielle



Recommendations:

- Repeat surveys in 5 years time to measure population recoveries
- Regional climate change adaptation and emergency response plans need to include measures to mitigate adverse impacts on coastal ecosystems including:
 - Careful management of woody debris inputs and removal
 - Landscape-scale predator control to offset losses caused by extreme weather
 - Carefully managing coastal defences and coastal retreat to create room for landward migration of coastal ecosystems

